

ASi-3 PROFIBUS Gateways with integrated Safety Monitor

ASi-3 Gateways with integrated Safety Monitor

2 / 1 ASi-3 Master, PROFIBUS device

1 ASi Safety Monitor for 2 ASi networks

- Operation using a single Monitor configuration!
Monitor processes safety nodes on two ASi networks
Coupling between the two networks superfluous

Up to 32 release circuits

- up to 6 CAT4, SIL 3 safe output circuits on the Monitor
safe relays or electronic safe outputs

Safe ASi outputs are supported

- up to 32 independent ASi outputs
Multiple safe ASi outputs possible via a single ASi address




(Figure similar)

Safe speed and standstill monitoring

Applications up to category 4/PLe/SIL 3

Chip card for storage of configuration data



Figure	Fieldbus Interface ⁽¹⁾	Safety communication	Outputs Safety, SIL 3, cat. 4	Inputs safety, expandable to	Safety outputs, independent according to SIL 3, expandable to	Number of ASi networks, number of ASi Master ⁽²⁾	Integrated decoupling, ASi current measurement in the gateway ⁽³⁾	Diagnostic and configuration interface ⁽⁴⁾	Article no.
	Safety PROFIBUS	Safe Link	6 release circuits; 6 x electronic safe outputs	max. 62 x 2 channels, max. 1922 in max. configuration	max. 32, max. 992 in max. configuration	2 ASi networks, 2 ASi-3 masters	yes, max. 4 A/ ASi network	Ethernet diagnostic	BWU2822
	Safety PROFIBUS	Safe Link	6 release circuits; 6 x electronic safe outputs	max. 31 x 2 channels, max. 1891 in max. configuration	max. 31, max. 991 in max. configuration	1 ASi network, 1 ASi-3 master	yes, max. 4 A/ ASi network	Ethernet diagnostic	BWU2793

(1) **Fieldbus interface:**

Communication interface between fieldbus and gateway: interfaces for standardized fieldbus systems in industrial automation.

(2) **Number of ASi networks, number of ASi Master: Safety devices:**

"Single Master": 1 ASi network, 1 ASi-3 Master.

"Double Master": 2 ASi networks, 2 ASi-3 Masters.

"Optional ASi Safety coupling circuit": 2 ASi networks, 1 ASi-3 Master.

(3) **Integrated decoupling, ASi current measurement in the gateway**

"yes, max. 4 A/ASi network": Data decoupling integrated in the gateway. Cost-effective power for 2 ASi networks with 1 power supply (optionally supply of multiple Single Gateways by 1 power supply). Operation with short cable lengths with standard 24 V power supply possible.

(4) **Diagnostic and configuration interface**

"Ethernet diagnostic": Access to ASi master and safety monitor via Bihl+Wiedemann proprietary software over Ethernet diagnostics interface.

The latest version of the device description file of the gateway is available in the "Downloads" section of the respective device.

ASi-3 PROFIBUS Gateways with integrated Safety Monitor

Article no.	BWU2793 / BWU2822
Fieldbus Interface	
Type	PROFIBUS according to IEC 61158 / IEC 61784-1
Baud rates	9,6 Kbaud up to 12 000 Kbaud, automatic recognition
DP functions	imaging of the ASi nodes as I/O data of the PROFIBUS complete diagnosis and configuration via the PROFIBUS DP
Card slot	chip card for storage of configuration data
Diagnostic Interface	
Type	Ethernet; RJ-45 according to IEEE 802.3
ASi	
ASi specification	3.0
Cycle time	150 μ s * (number of ASi-3 nodes + 2)
Operating voltage	30 V _{DC} (20 ... 31,6 V)
ASi Power24V capability ⁽¹⁾	yes
AUX	
Operating voltage	24 V _{DC} (19,2 ... 28,8 V)
Max current consumption	7,2 A
Display	
LCD	menu, indication of ASi addresses and error messages in plain text
LED power (green)	power ON
LED PROFIBUS (green)	PROFIBUS communication active
LED config error (red)	configuration error
LED U ASi (green)	ASi voltage o.k.
LED ASi active (green)	ASi normal operation active
LED prg enable (green)	automatic addresses programming enabled
LED prj mode (yellow)	configuration mode active
LED AUX (green)	auxiliary power
LEDs 1.Y1, 1.Y2, 2.Y1, 2.Y2 (EDM/Start) (yellow)	–
LEDs K1 ... K4 (green)	–
LEDs SI1 ... SI6 (yellow)	state of inputs: off: open on: closed
LEDs SO1 ... SO6 (yellow)	state of outputs: off: open on: closed
UL-specifications (UL508)	
External protection	An isolated source with a secondary open circuit voltage of ≤ 30 V _{DC} with a 3 A maximum over current protection. Over current protection is not required when a Class 2 source is employed.
In general	UL mark does not provide UL certification for any functional safety rating or aspects of the above devices.

ASi-3 PROFIBUS Gateways with integrated Safety Monitor

Article no.	BWU2793 / BWU2822
Environment	
Applied standards	EN 60529 EN 61000-6-2 EN 61000-6-4 EN 62061, SIL 3 EN 61508, SIL 3 EN ISO 13849-1, PLe
Operating altitude	max. 2000 m
Ambient temperature	0 °C ... +55 °C
Storage temperature	-25 °C ... +85 °C
Pollution degree	2
Housing	stainless steel, for DIN rail mounting
Protection category	IP20
Tolerable loading referring to humidity	according to EN 61131-2
Maximum tolerable shock and vibration stress	according to EN 61131-2
Voltage of insulation	≥500 V
Weight	800 g
Dimensions (W / H / D in mm)	100 / 120 / 106

(1) ASi Power24V

The device can be operated directly on a 24 V (PELV) power supply. The gateway has been optimized with integrated data coupling coils and adjustable self-resetting fuses for safe use of powerful 24 V power supplies.

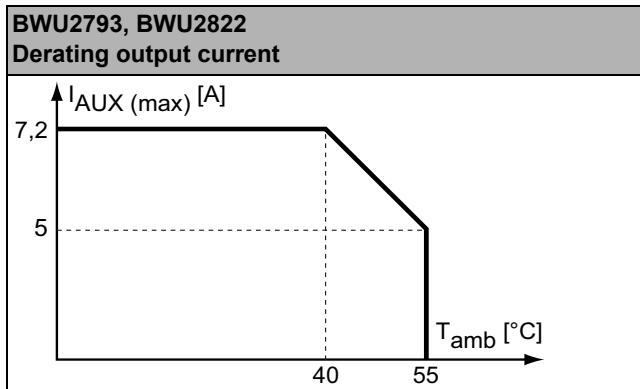
Article no.	BWU2793 / BWU2822
Safety monitor	
Start delay	<10 ms
Max. turn-off time	<40 ms
Antivalent switches for local inputs	yes
Standstill monitors for local inputs	6 axes up to 50 Hz ⁽¹⁾
Speed monitors for local inputs	3 to 6 axes up to 400 Hz ⁽²⁾
Connection	
Connection	COMBICON
Length of connector cable	unlimited ⁽³⁾
Input	
Inputs Safety, SIL3, Kat. 4	3 x 2 channels ⁽⁴⁾
Inputs digital, EDM	up to 6 standard inputs ⁽⁴⁾
Switching current	15 mA (T = 100 µs), continuously 4 mA at 24 V
Power supply	out of AUX
Output	
Number of release circuits on the monitor	6
Outputs	semiconductor output max. contact load: 1,2 A _{DC-13} at 30 V, Σ = 7,2 A in sum ⁽⁵⁾
Power supply (semiconductor outputs)	out of AUX
Test pulse (semiconductor outputs)	if output is on: minimum interval between 2 test pulses: 250 ms; maximum pulse width 1 ms

⁽¹⁾ connection at all SI or SO terminals possible.

⁽²⁾ connection only at terminals SO1 ... SO6 configured as standard inputs (see "Variations of terminal configuration for BWU2793, BWU2822")

ASi-3 PROFIBUS Gateways with integrated Safety Monitor

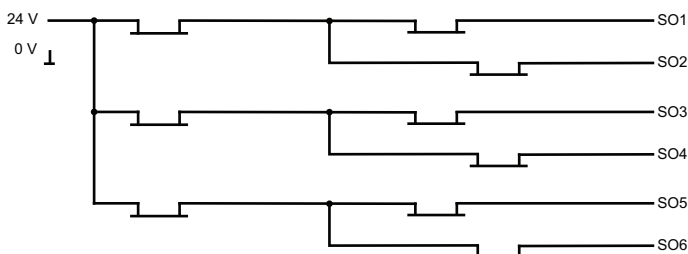
- (3) loop resistance $\leq 150 \Omega$
 (4) see "Variations of terminal configuration for BWU2793, BWU2822"
 (5)



Article No.	Operating current		
	master power supply, approx 300 mA out of ASi network	master power supply, max. 300 mA out of ASi circuit 1 (approx. 70 mA ... 300 mA), max. 300 mA out of ASi circuit 2 (approx. 70 mA ... 300 mA); in sum max. 370 mA	Cost-effective power for 2 ASi networks with 1 power supply, approx. 300 mA (PELV voltage)
BWU2793	-	-	•
BWU2822	-	-	•

	BWU2793 / BWU2822
Data decoupling integrated in the gateway	•
Redundant power supply out of ASi: all fundamental functions of the device remain available even in case of power failure in one of the two ASi networks	-
Current measurement of the ASi circuits	•
Self-resetting adjustable fuses	•
ASi earth fault monitor distinguishes between ASi cable and sensor cable	•
Cost-effective power for 2 ASi networks with 1 power supply	•

Safety outputs block diagram BWU2793, BWU2822



ASi-3 PROFIBUS Gateways with integrated Safety Monitor

Variations of terminal configuration for BWU2793, BWU2822

Terminal	Safe output	Safe input for mechanical contacts in combination with T1, T2 ⁽¹⁾	Safe antivalent input ⁽¹⁾	Safe electronic input ⁽¹⁾	Standard input ⁽¹⁾
SI1,2	–	•	•	•	•
SI3,4	–	•	•	•	•
SI5,6	–	•	•	•	•
SO1,2 ⁽²⁾	•	•	•	–	•
SO3,4 ⁽²⁾	•	•	•	–	•
SO5,6 ⁽²⁾	•	•	•	–	•

⁽¹⁾ Inputs must be supplied from the same 24 V voltage source connected to the supply terminals of the local safe I/Os of the device.

⁽²⁾ If outputs are configured as inputs, the input current has to be limited by an external element at ≤100 mA

Connections: Gateway + Safety Monitor

BWU2793	Connection	Description	
	SI1, SI3, SI5	Safe input terminal (T1)	
	SI2, SI4, SI6	Safe input terminal (T2)	
	T1	Clock output 1	
	T2	Clock output 2	
	SO1 ... SO6	Safe semiconductor outputs 1 ... 6	
	24V, 0V	Power supply for local I/Os	
	+ASI 1-	Connection of ASi circuit	
	ASI +PWR-	Power supply for Gateway and ASi networks	

ASi-3 PROFIBUS Gateways with integrated Safety Monitor

BWU2822	Connection	Description
<p> T2 SI2 SI4 SI6 T1 SI1 SI3 SI5 safe inputs/ standard inputs </p> <p> SO5 24V 0V SO6 SO1 SO2 SO3 SO4 safe outputs </p> <p> +ASI 1- +ASI 1- +ASI 2- ASI +PWR- (max. 8A) </p>	SI1, SI3, SI5	Safe input terminal (T1)
	SI2, SI4, SI6	Safe input terminal (T2)
	T1	Clock output 1
	T2	Clock output 2
	SO1 ... SO6	Safe semiconductor outputs 1 ... 6
	24V, 0V	Power supply for local I/Os
	+ASI 1-, +ASI 2-	Connection of ASi circuits
	ASI +PWR-	Power supply for Gateway and ASi networks

Accessories:

- Safe contact expander, 1 or 2 independent channels (art. no. BWU2548 / BWU2539)
- PROFIBUS DP Master Simulator (art. no. BW1257)
- Bihl+Wiedemann Suite - Safety Software for Configuration, Diagnostics and Commissioning (art. no. BW2916)
- Power supplies, e.g.: 30 V power supply, 4 A, 1 phase (art. no. BW4218), 30 V power supply, 8 A, 1 phase (art. no. BW4219), 30 V power supply, 8 A, 3 phases (art. no. BW4220), 30 V Power Supply, 16 A, 1 phase (art. no. BW4221), 30 V Power Supply, 16 A, 3 phases (art. no. BW4222) (for further power supply units visit www.bihl-wiedemann.de/en/products/accessories/power-supplies)