

## PSSu BP-C1 1/12 C

312623



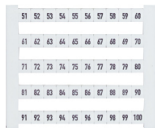
PSSu, base module for electronic modules, periphery, C-rail, 1-row, 6 connection levels, 12 terminals, spring-loaded connection. All the internal 7 signals are present at the terminals!

## Technical details

General data	
Approval:	CE, UKCA,
Technical data	
Mechanical data	
Net weight:	46 g
Gross weight:	59 g
Environment	
RoHS directive:	2011/65/EU, 2015/863/EU
RoHS conformity:	yes
RoHS exceptions:	yes
RoHS except.s acc. to direct.:	6c
REACH compliance:	contains min. 1 SVHC-substance
REACH included substances:	Lead
%-part of the pollutant:	> 0,1%
CAS No.:	7439-92-1
WEEE classification (08/2018):	5 devices (feed size < 50cm)
SCIP entry available:	0
Commercial data	
Harmonized System Code:	85369095
UNSPSC 25:	39122331

EAN-Code:	4046548058482
ECLASS version:	ECLASS-13
ECLASS Reference Feature:	27242603
ETIM Version:	ETIM-9.0
ETIM Reference Group:	EG000024
ETIM Reference Feature:	EC001598
Volume:	0 dm3

## Optional accessories



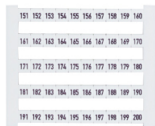
312960

PSSu A LA2 ( 10x50 pcs.)



312951

PSSu A ME1 (10x6 pcs.)



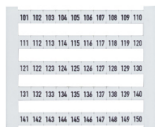
312962

PSSu A LA4 (10x50 pcs.)



312950

PSSu A ME0 (10x6 pcs.)



312961

PSSu A LA3 (10x50 pcs.)



312953

PSSu A ME3 (10x6 pcs.)



312952

PSSu A ME2 (10x6 pcs.)



312963

PSSu A SH S (10 pcs.)



312955

PSSu A ME5 (10x6 pcs.)



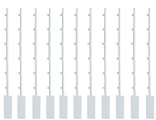
312900

PSSu A ET (10 pcs.)



312954

PSSu A ME4 (10x6 pcs.)



312957

PSSu A ME7 (10x6 pcs.)



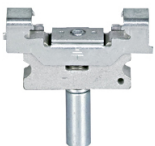
312902

PSSu A EC



312956

PSSu A ME5 (10x6 pcs.)



312901

PSSu A ETM (2 pcs.)



312967

PSSu A LA0.1 (10 x 108 pcs.)

---



312959

PSSu A LA1 (10x50 pcs.)

---



312958

PSSu A LA0 (10 x 108 pcs.)

---



312949

PSSu A ET PE (10 pcs.)

---