

## PSSu E F PS1-T

314191



PSSu, electronic module, failsafe, supply voltage, infeed module supply 24 V DC 2 A, infeed periphery supply 24 V DC 10 A, infeed C-rail 10 A, for increased environmental requirements. The product has been discontinued. The successor is 314192.

## Technical details

General data	
Approval:	CE, UKCA, cULus Listed, KOSHA, EAC (Eurasian), TÜV
Application range:	Standard/failsafe
Technical data	
Electrical data	
Purpose of U1:	Module supply
Supply voltage (V):	24 - 24 V
Type of supply voltage U1:	DC
Power consumption DC:	12 W
Purpose of U2:	Periphery supply
Supply voltage 2 (V):	24 - 24 V
Type of supply voltage U2:	DC
Tolerance of U2:	-30 %/+25 %
Purpose of UINT1:	int. system voltage
Tolerance of UINT1:	-2 %/+3 %
Max. curr. contin. oper. UINT1:	2 A
Bridge U-interrupt UINT1 stan.:	EN 61131-2
UINT1 short circuit proof:	Yes
Environmental data	
Climatic suitability to ...:	EN 60068-2-30, EN 60068-2-2, EN 60068-2-1, EN 60068-2-78, EN 60068-2-14

Ambient temperature:	-40 - 70 °C
Climatic suitability standard:	EN 60068-2-78
Humidity rating:	93 % r. h. at 40 °C
Condensation permitted?:	Briefly
Perm. operating height ASL:	5000 m
EMC to standard ...:	EN 61131-2, EN 61000-6-2, EN 61000-6-4
Vibration to standard ...:	EN 60068-2-6
Broad band noise to:	EN 60068-2-64
Acc. shock to standard1:	150 m/s <sup>2</sup>
Acc. shock to standard2:	25g
Clearance & creepage dist. to:	EN 61131-2
Overvoltage category:	II
Pollution degree clear.&creep.:	2
Protection type standard:	EN 60529
<b>Mechanical data</b>	
Housing material lower section:	PC
Housing material front plate:	PC
Housing material code:	PA
Terminal style:	plug-in
Height dimension:	76 mm
Width dimension:	25.2 mm
Depth dimension:	60.2 mm
Net weight:	60 g
Gross weight:	69 g
Name of coding element:	C
Colour of coding element:	Yellow
<b>Environment</b>	
WEEE classification (08/2018):	5 devices (feed size < 50cm)
<b>Commercial data</b>	

Harmonized System Code:	85044095
UNSPSC 25:	39122331
EAN-Code:	4046548049114
ECLASS version:	ECLASS-13
ECLASS Reference Feature:	27242611
ETIM Version:	ETIM-9.0
ETIM Reference Group:	EG000024
ETIM Reference Feature:	EC002583
Volume:	0.146 dm3

## Obligatory accessories



314657

PSSu BS 2/8 C-T



314655

PSSu BS-R 2/8 C-T



314656

PSSu BS 2/8 S-T



314654

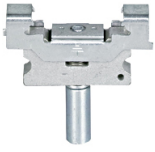
PSSu BS-R 2/8 S-T

## Optional accessories



312900

PSSu A ET (10 pcs.)



312901

PSSu A ETM (2 pcs.)

---



312967

PSSu A LA0.1 (10 x 108 pcs.)

---



314902

PSSu A EC-T

---



312958

PSSu A LA0 (10 x 108 pcs.)

---



312949

PSSu A ET PE (10 pcs.)

---